

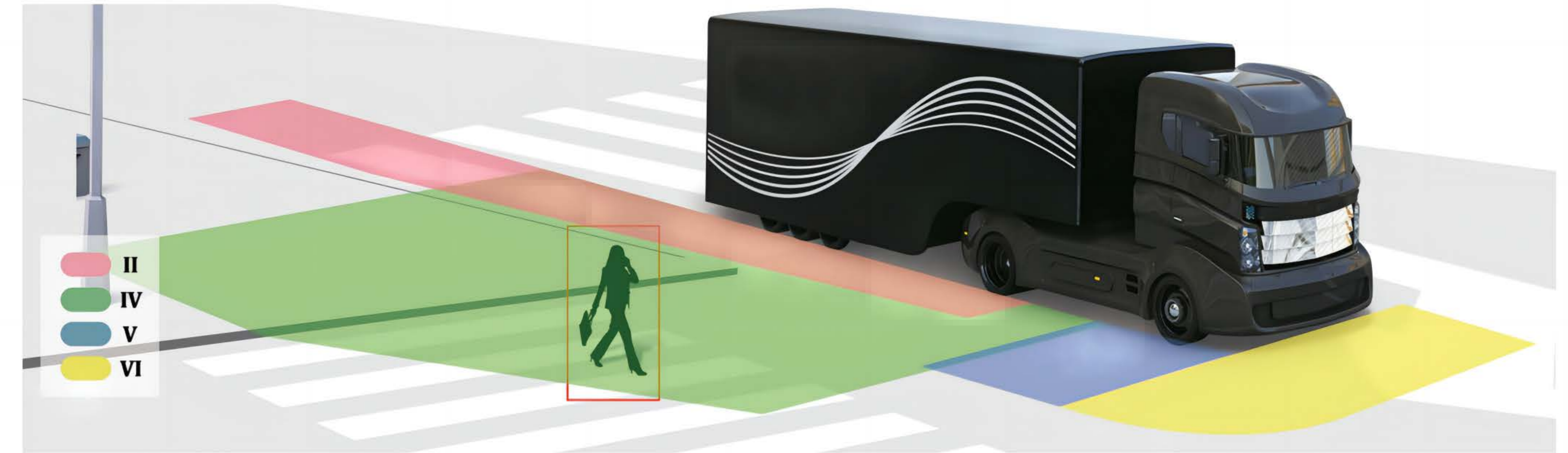
AI

MOBILE SYSTEMS WITH TELEMATICS & SAFETY DRIVING SYSTEM

MCY MCY TECHNOLOGY LIMITED

IATF16949 | CE | UKCA | FCC | RoHS | E-mark | R10 | R46 | R118 | IP67 | IP68 | IP69K

E-side Mirror System



Class II and Class IV Vision

The 12.3 inch E-side mirror system, intended to replace the physical rearview mirror, captures road conditions images through dual lens cameras mounted on the left and right side of the vehicle, and then transmits to the 12.3 inch screen fixed to the A-pillar within the vehicle.

- ECE R46 approved
- Streamlined design for lower wind resistance and less fuel consumption
- True color day/night vision
- WDR for capturing clear and balanced images
- Auto dimming to relieve visual fatigue
- Hydrophilic coating to repel water droplets
- Auto heating system
- IP69K waterproof



Class V and Class VI Vision

The 7 inch camera mirror system is designed to replace the front mirror and side close proximity mirror, to help driver eliminate class V and class VI blindspots, increasing driving safety.



- High definition display
- Full cover class V and class VI
- IP69K waterproof



Other Cameras For Optional

- MSV1**
- AHD side mounted camera
 - IR night vision
 - IP69K waterproof



- MSV1A**
- AHD side mounted camera
 - 180 degree fisheye
 - IP69K waterproof



- MSV20**
- AHD dual lens camera
 - Looking down and back view
 - IP69K waterproof



| You need help? —We are happy to help! Email: sales@mcytech.com

Driver Status Monitoring (DSM) Camera



DSM camera is a facial recognition system based on an AI algorithm for status analysis and evaluation. It can detect and alert potential risks related to the driver's abnormal behavior, such as drowsiness, distraction, smoking, phone calling, and more.

- Support 1CH CVBS video output
- High precision sensing algorithm for real-time analysis and alarms
- Built-in GPS module, recording actual speed and location
- Integration with CMS platform, support for real-time alarms and video uploading

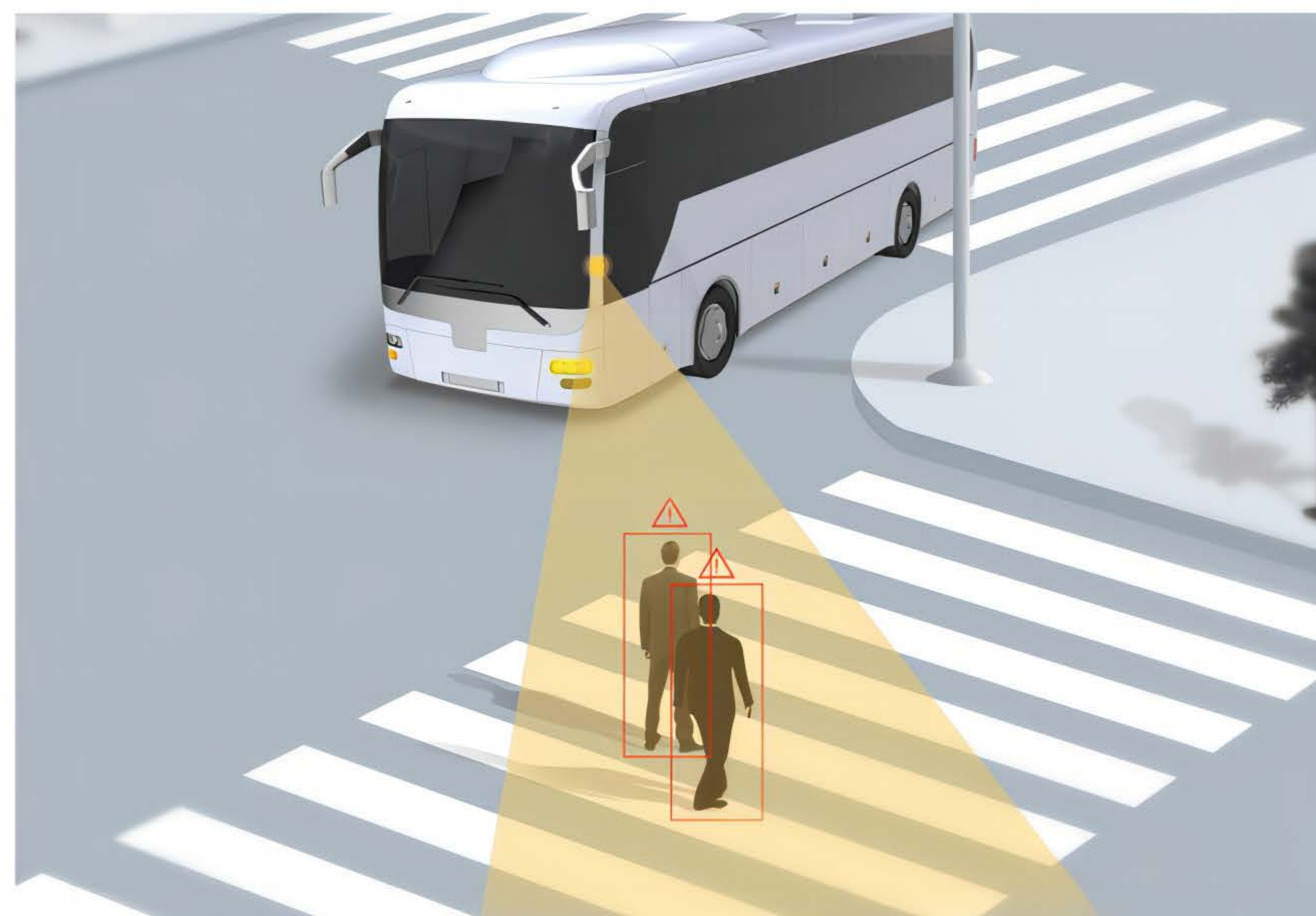


AFD-05

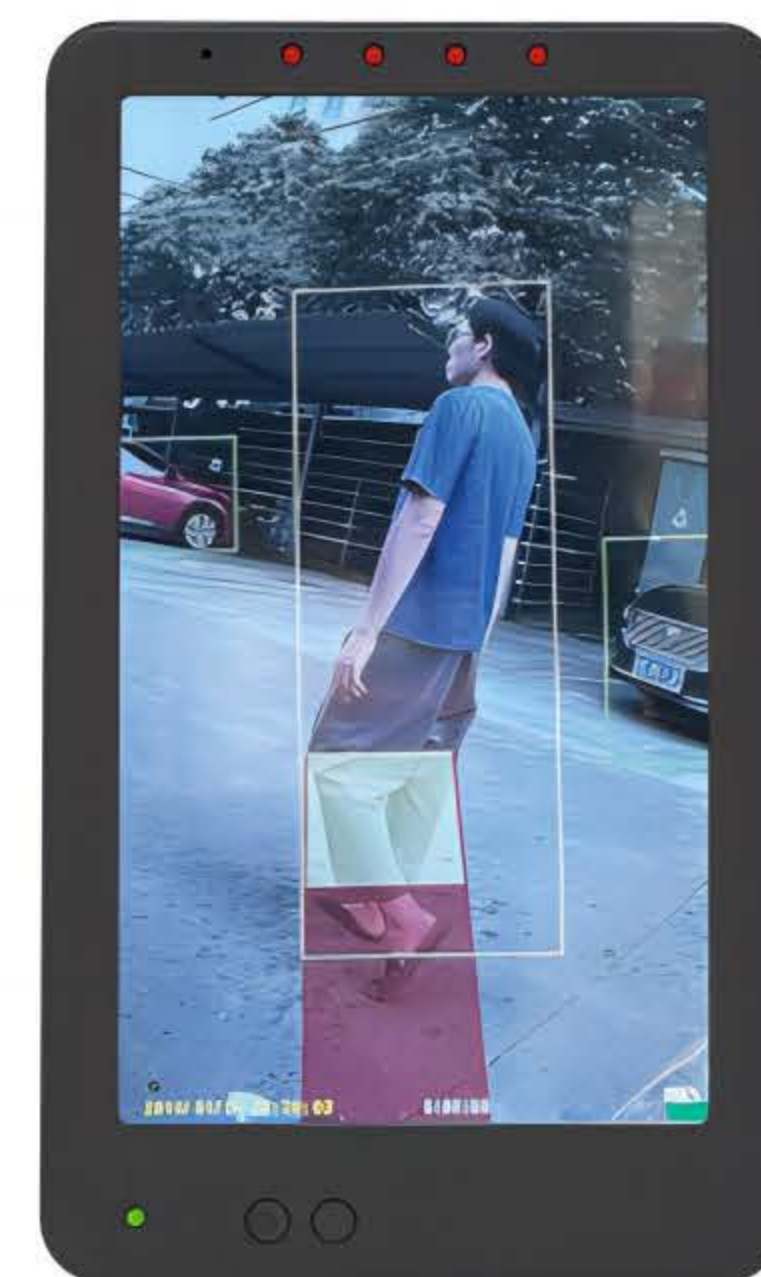
A-pillar BSD Camera Monitor System

The 7 inch A-pillar camera monitor system comprises a 7 inch digital monitor and an exterior side-mounted AI deep learning algorithms camera, offering visual and audible alerts to notify the driver upon detecting a pedestrian or cyclist beyond the A-pillar blind area.

- A-pillar blind spot human detection for left/right turning
- AI human detection deep learning algorithms built into the camera
- Visual & audible alarm output to alert driver
- Support video & audio loop recording, video playback

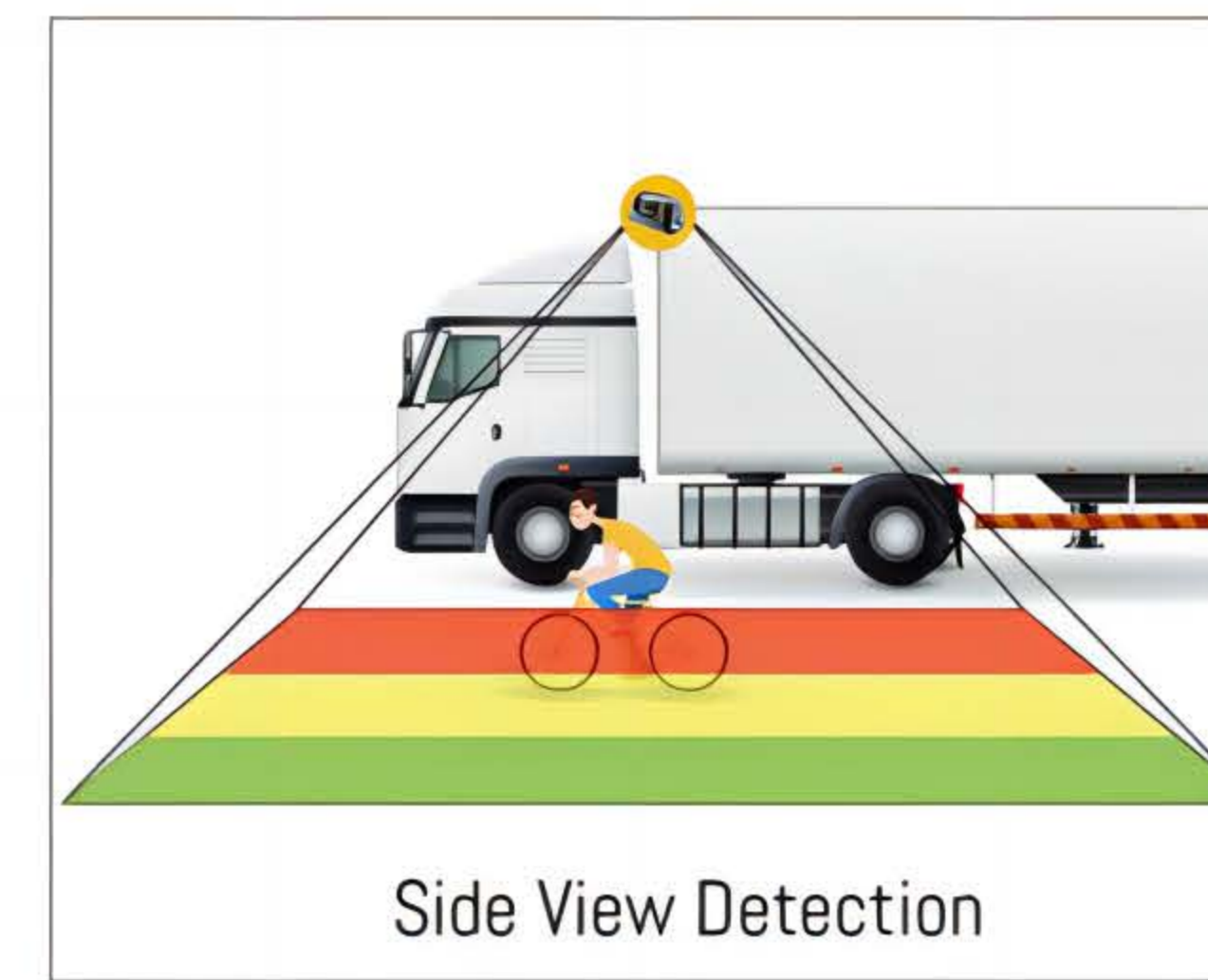


MSV2

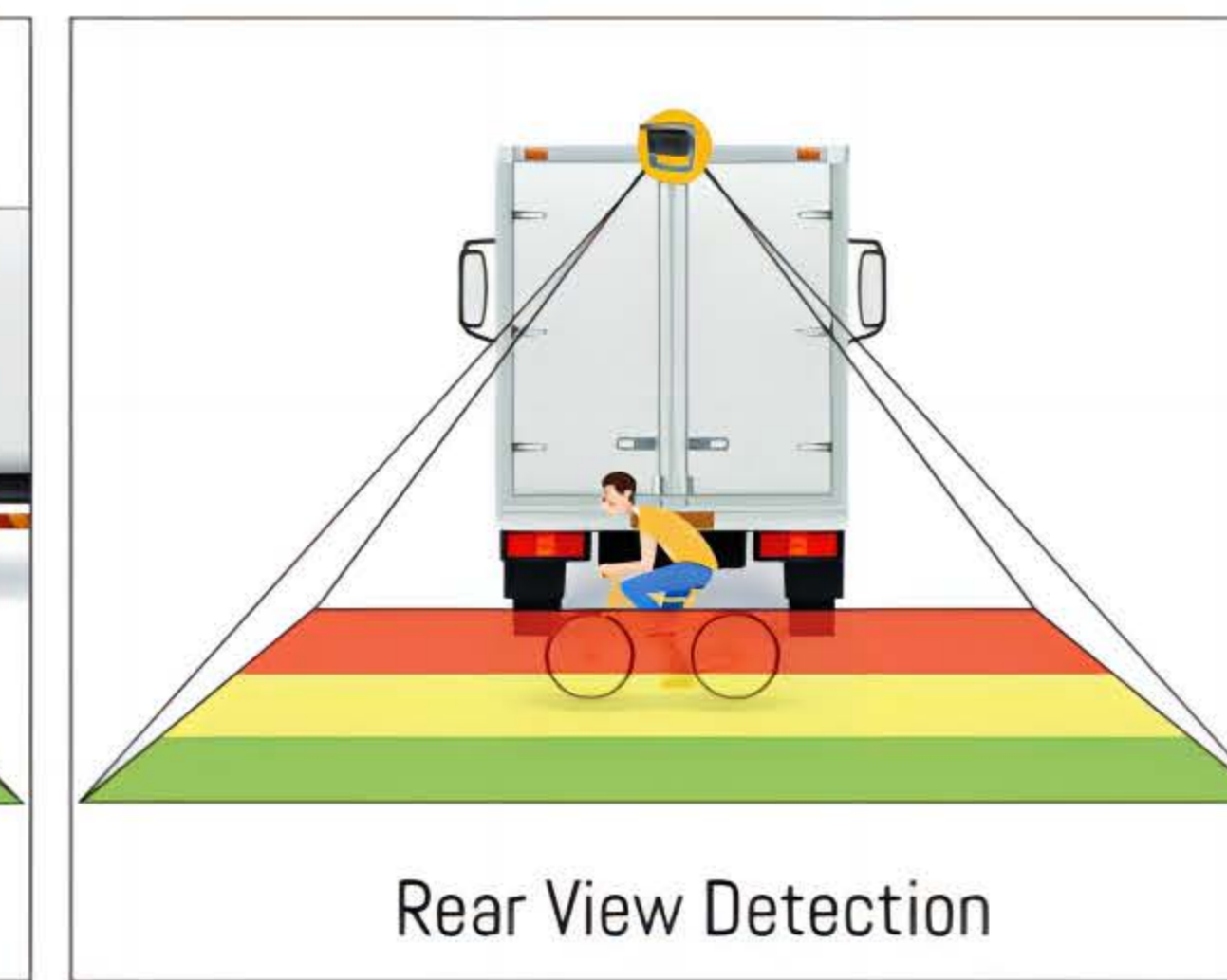


TF711

AI Intelligent Detection Camera



Side View Detection



Rear View Detection



TF78



MRV10



MSV23



Alarm Box (optional)
TPB-02

The AI intelligent detection camera can detect pedestrians, cyclists, and vehicles in the blind spot around the vehicle and provide real-time visual and audio alerts to remind drivers of potential risks.

- 7 inch HD side / rear / overlook camera monitor system for real time detecting pedestrians, cyclists and vehicles
- Visual and audible alarm output to remind drivers of potential risks
- External alarm box with audible alarm to alert pedestrians, cyclists or vehicles (optional)
- Warning distance can be adjustable: 0.5~10m
- Compatible with HD monitor and MDVR

5CH AI Early Warning Camera System

The 5 channel AI early warning camera system, featuring advanced AI technology for pedestrian detection, is designed to help drivers stay safe on the road. With the AI-powered pedestrian monitoring, the system can quickly and accurately detect pedestrians on the road, providing drivers with real-time visual and audio alerts to help them stay aware of their surroundings.

- 5 channel front, inside, left, right and rear view for simultaneous display
- AI deep learning algorithms with visual and audio warnings for left/right/rear blind spots
- 1* 128GB SD card for real-time video loop recording and video playback
- Universal for vehicle models with DC 10V~32V



TF103



MSV3

MSV3

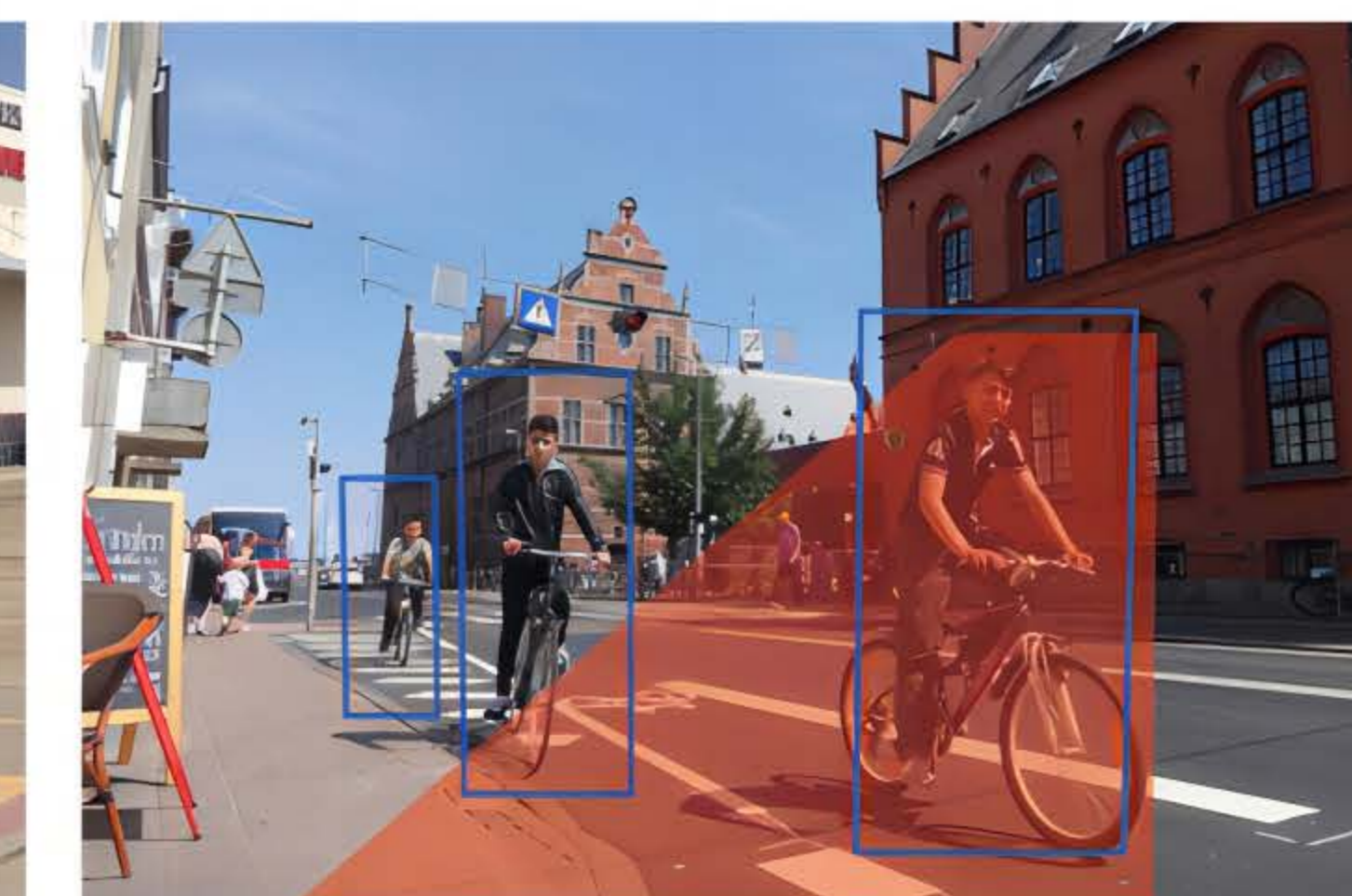
MT5C

MRV1D

SE8



Rear View Detection



Left View Detection



Right View Detection

HD WIRELESS SYSTEM

2.4G Wireless System

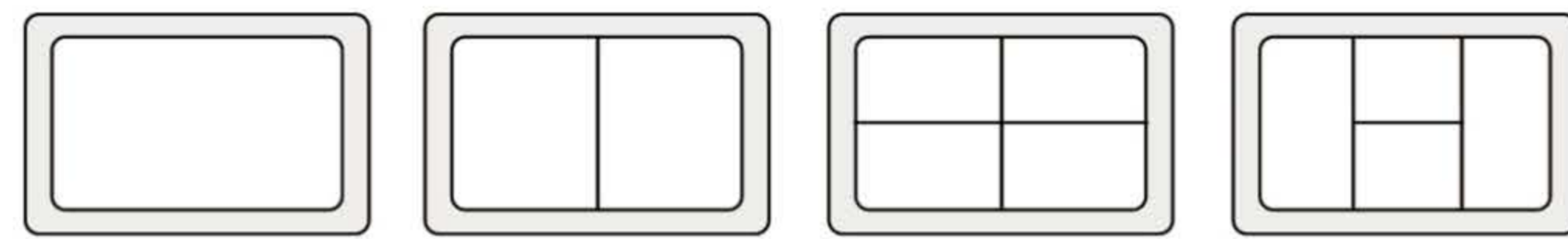


TF78

MRV12

The 7 inch 2.4GHz wireless system allows easy viewing around your vehicle without the need to run long cables, especially beneficial for commercial vehicles such as lorries, harvesters, and trailers.

- 7 inch wireless quad mode monitor, up to 4 cameras display simultaneously
- 1* 128GB SD card storage for video loop recording
- Strong magnetic base for quick mounting anywhere
- Automatic pairing with no interference
- 9600mAh rechargeable battery
- 200m (656ft) transmission distance



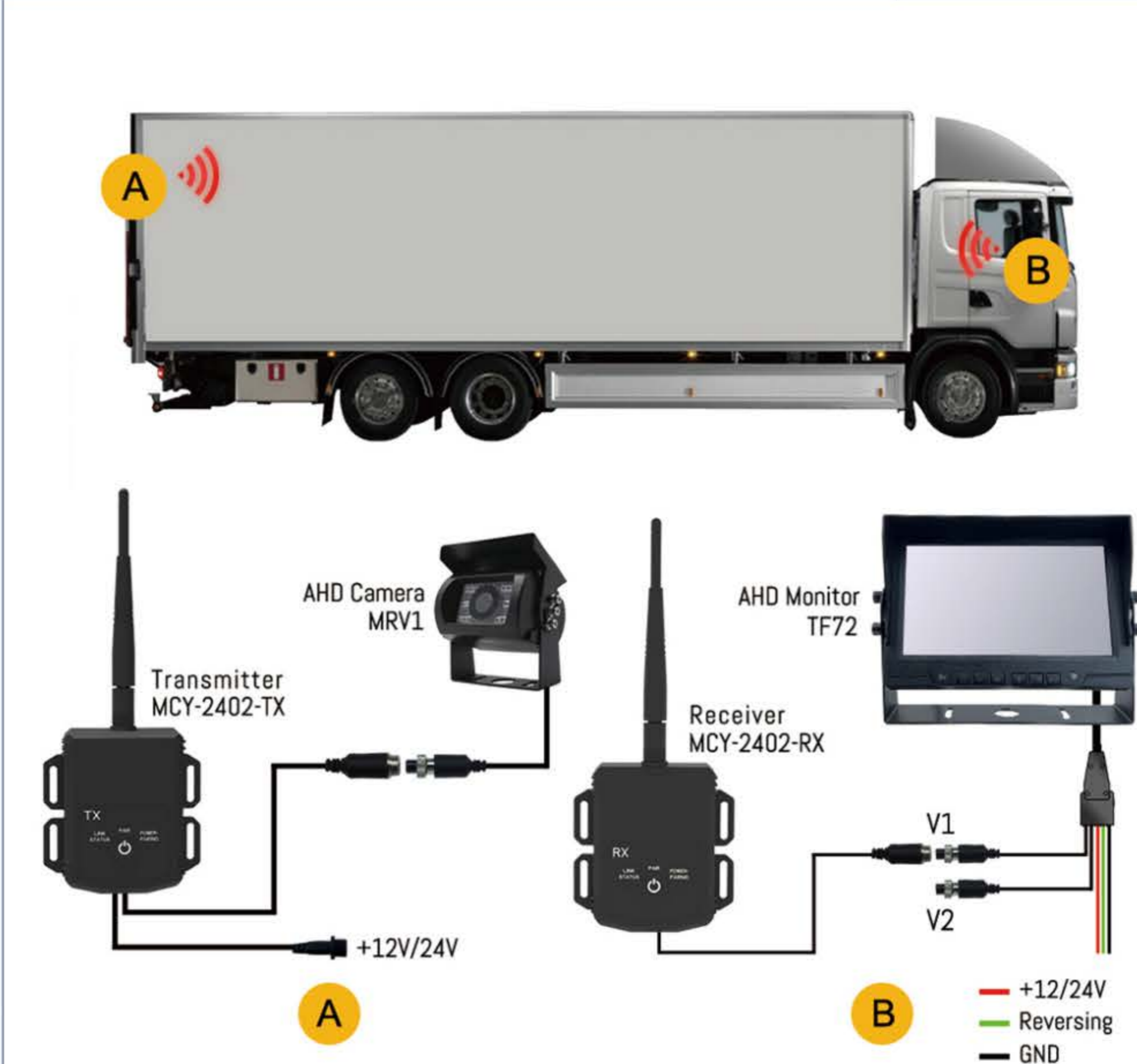
Forklift Camera System



The forklift camera system is designed to assist forklift drivers in their daily operations, enhancing safety and providing a broader range of vision when maneuvering and storing loads.

- 7 inch wireless monitor, 1*128GB SD card storage
- Wireless forklift camera, designed specifically for forklifts
- Magnetic base for quick installation
- Automatic pairing with no interference
- 9600mAh rechargeable battery
- 200m (656ft) transmission distance

Wireless Transmitter & Receiver



The HD wireless transmitter and receiver kit is designed to transmit AHD signal into wireless, enabling a transmission distance of up to 300m (984ft).

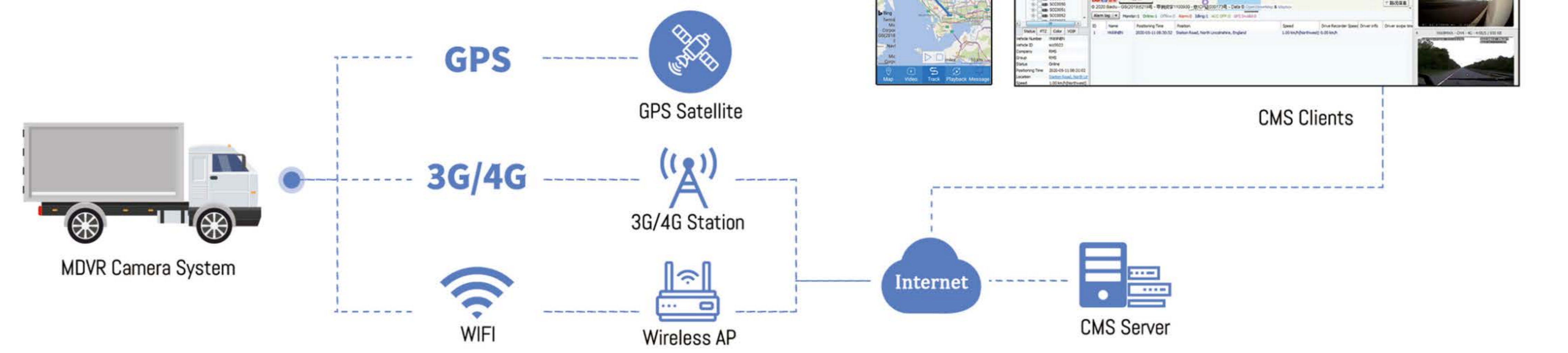
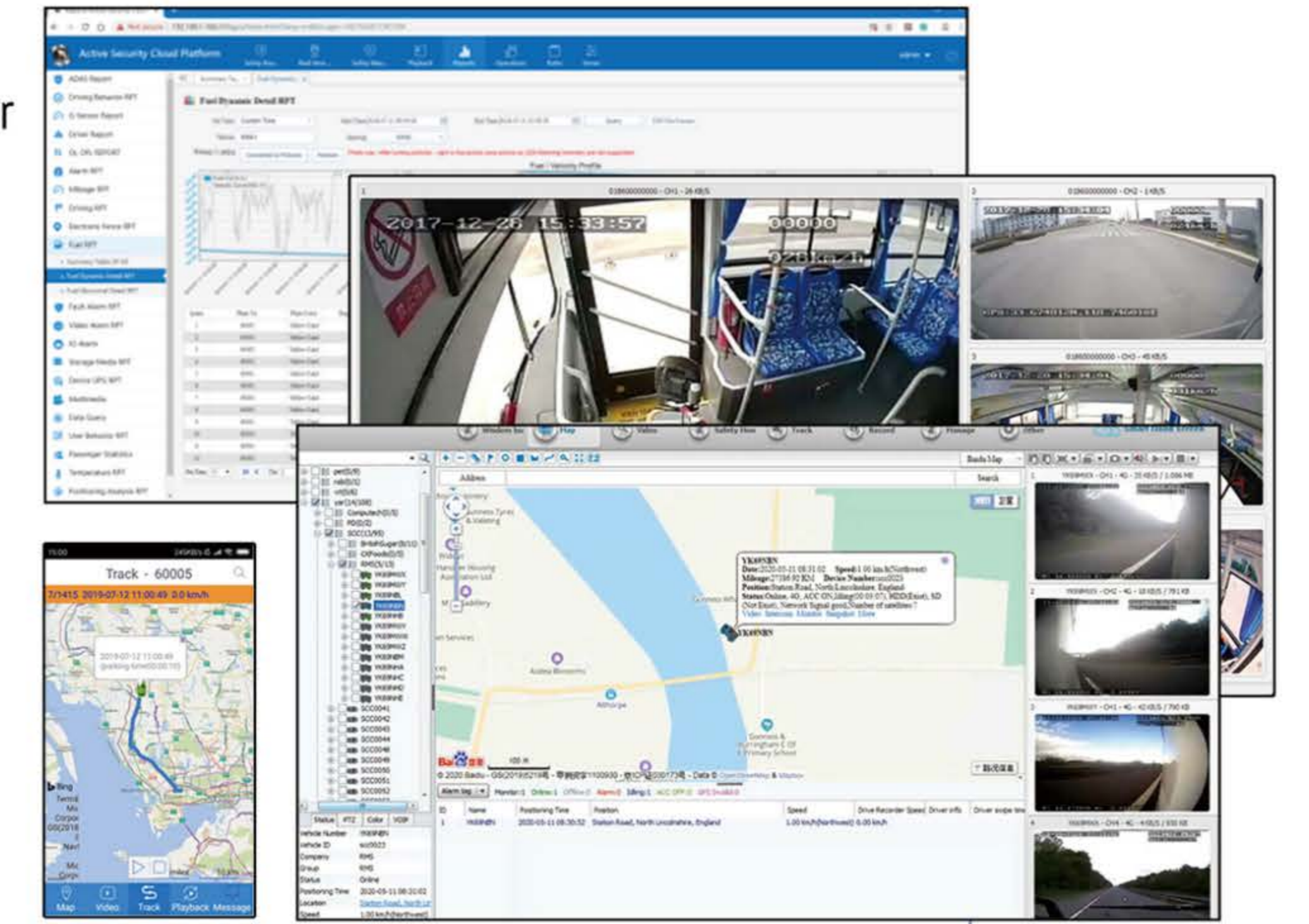
- Built in 2.4GHz wireless module
- One-button quick pairing
- Transmission support for AHD/CVBS signals
- The receiver can be connected to a monitor or MDVR
- IP69K waterproof

Mobile DVR Video Surveillance Solution

CMS Platform Management

The CMS platform enables a company's management and dispatchers to monitor all vehicles from a centralised location, with the goal of improving driver and passenger safety, offering real-time tracking, ensuring proper vehicle use, managing work breaks, and reducing company liability risks.

- Live remote video monitoring, GPS positioning, video storage, video playback, two-way talkback, image snapshots, statistical report, vehicle scheduling, oil quantity statistics, temperature sensor, humidity sensor, and so on.
- Support windows, Android, iOS clients



Truck MDVR Solution



The all-in-one truck MDVR camera system with road facing/cabin facing/side/rear cameras achieves a full view around the vehicle. It provides driving assistance, driver's behaviour detecting, videos recording, remote monitoring and more.

- | | |
|---|---|
| <p>1 MAR-HJ05</p> <ul style="list-style-type: none"> • 4 +1 channel 1080P MDVR • Support SD card/SSD/HDD storage • Support 3G/4G/WIFI/GPS | <p>2 TF92</p> <ul style="list-style-type: none"> • 9 inch VGA Monitor • Resolution 1024*600 • DC 12V/24V |
| <p>3 MT5C</p> <ul style="list-style-type: none"> • Road facing front IPC camera • Built in audio • Wide angle view | <p>4 AFD-05</p> <ul style="list-style-type: none"> • Driver behavior detection • Real time alarm • Alert message upload |
| <p>5 MSV7A</p> <ul style="list-style-type: none"> • Right/left side camera • IR night vision • IP69K waterproof | <p>6 MRV1D</p> <ul style="list-style-type: none"> • HD reversing camera • IR night vision • IP69K waterproof |

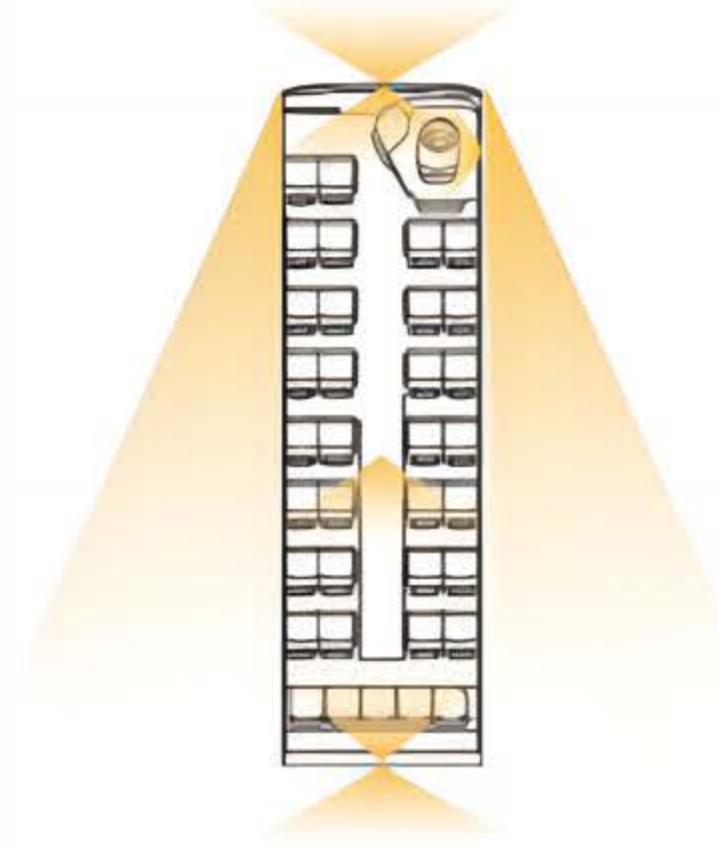
Bus MDVR Solution



The bus surveillance system can be used to record all activities inside and outside of the bus, safeguarding passengers and public safety throughout the entire journey.

- | | |
|---|--|
| <p>1 MAR-HK09A</p> <ul style="list-style-type: none"> • 8 channel 1080P MDVR • Support SD card/SSD/HDD storage • Support 3G/4G/WIFI/GPS | <p>2 TF103</p> <ul style="list-style-type: none"> • 10.1 inch AHD monitor • Resolution 1024*600 • Support AHD720P/1080P/CVBS |
| <p>3 SE8</p> <ul style="list-style-type: none"> • Front view camera • Built in audio • IR night vision | <p>4 MD5BR</p> <ul style="list-style-type: none"> • Interior camera • Built in audio • Wide angle view |
| <p>5 MSV3</p> <ul style="list-style-type: none"> • Right/left side camera • Wide angle view • IP69K waterproof | <p>6 MRV1</p> <ul style="list-style-type: none"> • HD reversing camera • IR night vision • IP69K waterproof |

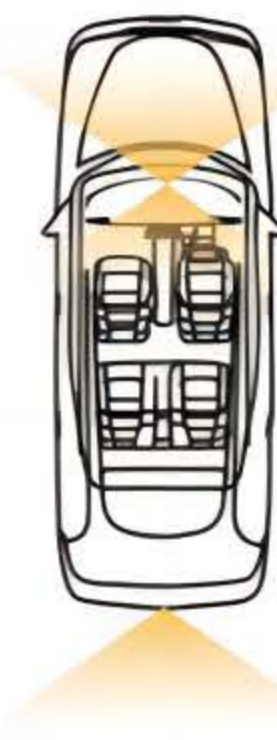
School Bus MDVR Solution



The school bus camera system can real-time capture students and driver activities inside and outside the school bus, helping to address parents and school concerns and ensuring safety both on and off the school bus.

- | | |
|--|--|
| <p>1 MAR-HK08</p> <ul style="list-style-type: none"> 8 channel MDVR Support SD card/SSD/HDD storage Support 3G/4G/WIFI/GPS <p>3 TF103</p> <ul style="list-style-type: none"> 10.1 inch AHD monitor Resolution 1024*600 Support AHD720/1080P/CVBS <p>5 MD23</p> <ul style="list-style-type: none"> Wide angle view Built in audio IR night vision | <p>2 MT5B</p> <ul style="list-style-type: none"> Front view camera Built in audio Wide angle view <p>4 MSV3</p> <ul style="list-style-type: none"> Right/left side camera Wide angle view IP69K waterproof <p>6 MRV2</p> <ul style="list-style-type: none"> HD rear camera IR night vision IP67 waterproof |
|--|--|

Taxi MDVR Solution



The taxi CCTV cameras can be used to record inside and outside the cab, preventing passengers who don't pay or act unruly, especially when drunk, keeping both passengers and drivers safety.

- | | |
|---|--|
| <p>1 MAR-SL04</p> <ul style="list-style-type: none"> 4 channel dual SD card MDVR Support dual SD card storage Support 3G/4G/WIFI/GPS <p>3 MDC01</p> <ul style="list-style-type: none"> Front/in-cab dual view camera Built in audio Wide angle view | <p>2 TF76</p> <ul style="list-style-type: none"> 7 inch VGA monitor Resolution 1024*600 DC 12V/24V <p>4 MT19</p> <ul style="list-style-type: none"> HD rear camera 180 degree wide view IP69K waterproof |
|---|--|

DASH CAMERA

The 4 channel dash camera DVR can capture 1080P full HD videos of the road ahead with a 136° view angle. It can connect up to three additional 1080P cameras. This means the dash camera functions as a mini DVR for the professional fleet management.

- Built in 4G/WIFI/GPS
- Wide angle view to cover the full lane in front of the vehicle
- High performance H.264 video encoding
- Support 2*SD card storage (max. 256GB)
- Support Windows/iOS/ Android platform management



Dash Camera Optional



DC-02-A2
4CH 1080P, 4G+GPS+WIFI,
G-sensor, CMSV6 platform



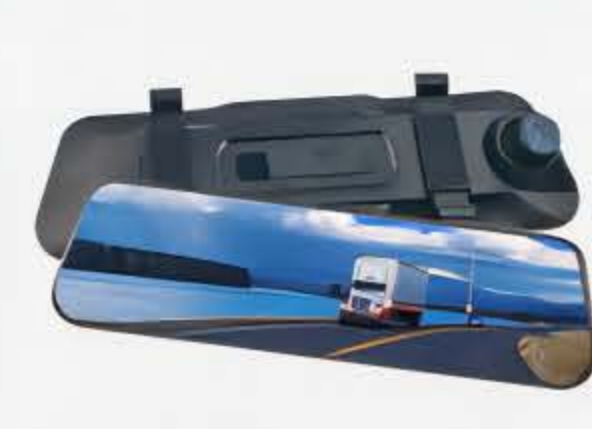
DC7-02-A
2CH, 1080P+720P, ADAS+DMS,
4G+GPS+WIFI, CMSV6 platform



DC8-01-A
1CH 4K, mobile connectivity



DC10-02
2CH 720P/1080P, WIFI,
G-sensor, mobile connectivity,
with 3 inch screen



DC11-02-A
2CH, 2K+1080P, WIFI+GPS, BSD,
ADAS, with 10 inch touch screen



SD-33
3CH, G-sensor,
with 4 inch screen

360 DEGREE SVM CAMERA SYSTEM

The 3D 360 degree surround view camera system synthesises images from four cameras to create a 360 degree panoramic bird eye view of a vehicle's surroundings, offering the driver a comprehensive and real-time perspective of the vehicle's movement and potential obstacles in all directions. It proves to be the best choice for assisting the driving of cars, buses, trucks, school buses, motorhomes, ambulances, and more.

- 4 high resolution 180 degree fisheye cameras
- Exclusive fisheye distortion correction
- Guided camera calibration
- Seamless 3D & 360 degree video merging
- Dynamic & intelligent view angle switching
- Driving video recording
- Flexible omni-directional monitoring
- 360 degree blind spots coverage
- G-sensor triggered recording

For car



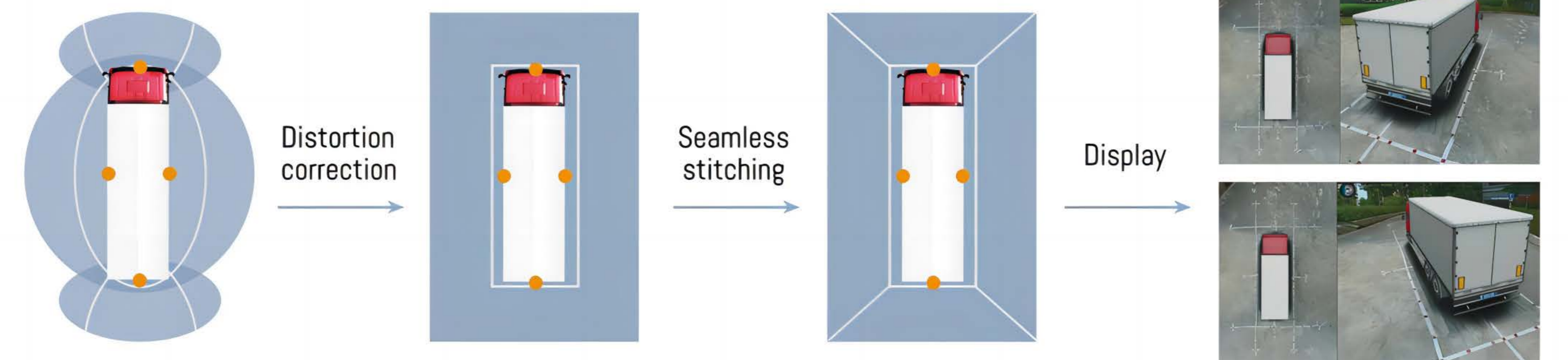
M360-13BM-C4

For truck & bus



M360-13AM-T5

360 Degree Panorama Synthesis



Application Scenarios



Side parking



Reverse parking



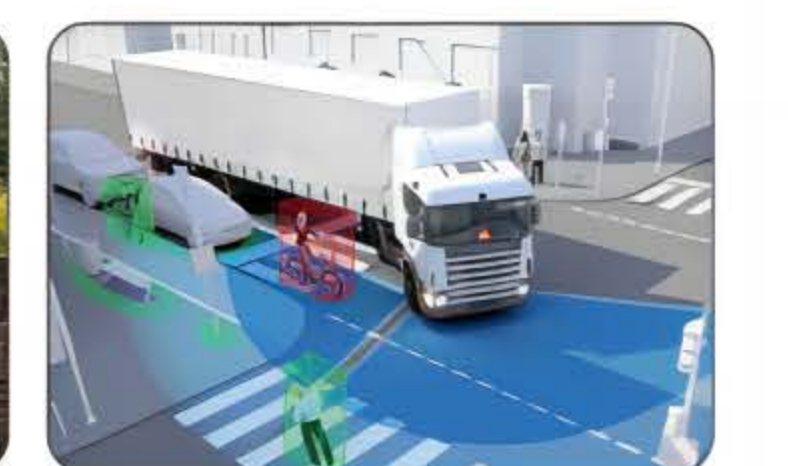
Slope sections



Turning assist



Narrow road / lane



Blind spots coverage

MCY TECHNOLOGY LIMITED

SAFER MOBILITY FOR SAFER WORLD

Add: No. 7, Longtang 1st Road, Tanzhou Town
Zhongshan, Guangdong, China
Email: sales@mcytech.com
Web: www.mcytech.com
Tel: +86 760 8663 8369



WeChat



Website